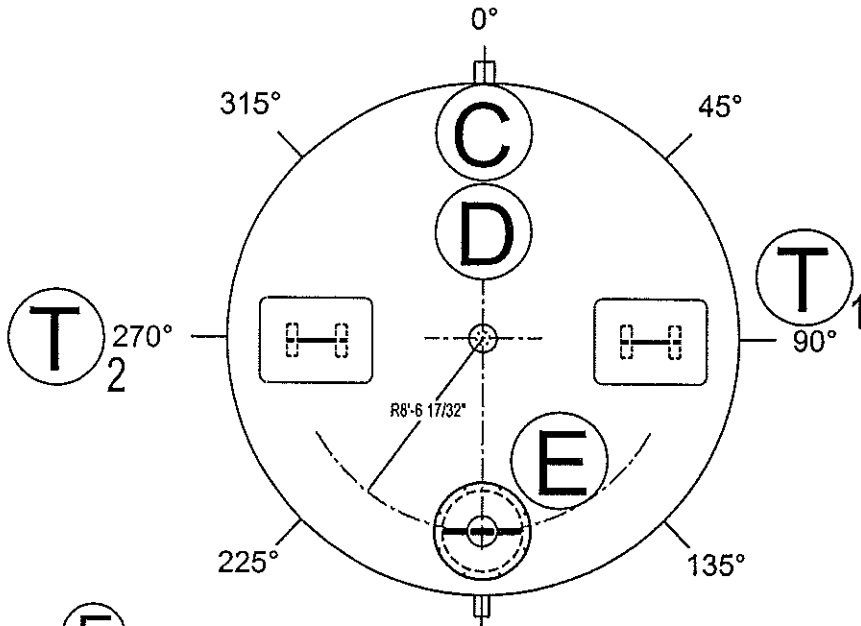
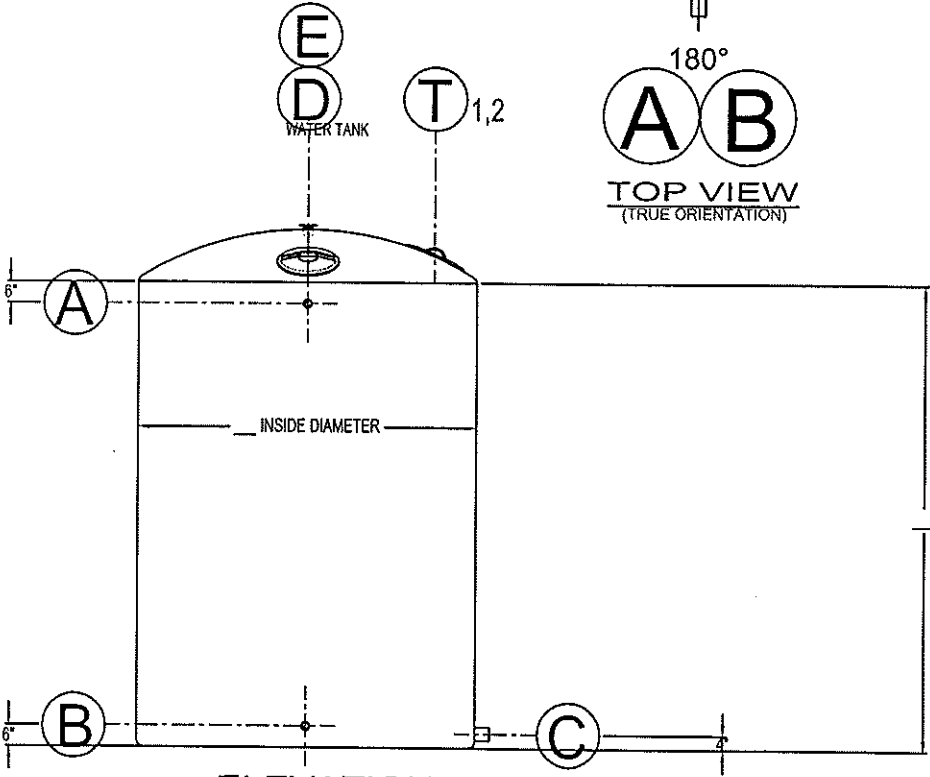


- NOTES:**
1. TOP NOZZLES DIMENSIONED RADIALLY WILL HAVE ORIENTATION ALIGNED WITH RADIAL CENTERLINE, UNLESS OTHERWISE SPECIFIED BY CUSTOMER.
  2. TYPICAL PROJECTION FOR ALL NOZZLES IS 6" FROM INSIDE DIAMETER OF VESSEL, UNLESS OTHERWISE SPECIFIED ON DRAWING
  3. NOZZLE I.D. IS TYPICALLY RESTRICTED DUE TO INTERNAL LAY-UP PROCEDURE. IF FULL INSIDE DIAMETER IS CRITICALLY NEEDED, PLEASE INFORM MANUFACTURER.
  4. TOTAL LAMINATE THICKNESS: IS THE SUM OF THE STRUCTURAL THK. AND THE CORROSION BARRIER, WHEN APPLICABLE.



180°  
**A B**  
 TOP VIEW  
 (TRUE ORIENTATION)



**ELEVATION**  
 ITEMS SHOWN IN THIS VIEW MAY BE ROTATED FOR CLARITY  
 SEE TOP VIEW FOR TRUE ORIENTATION

**SCHEDULE OF FITTINGS AND ACCESSORIES**

MARK	QUAN	SIZE	TYPE	DESCRIPTION	REMARKS
A	1	1 1/2"	FRP	FNP THREADED HALF COUPLING	FILL-LINE CONNECTION
B	1	1 1/2"	FRP	FNP THREADED HALF COUPLING	FILL-LINE CONNECTION
C	1	2"	FRP	FNP THREADED HALF COUPLING	DRAIN-LINE CONNECTION
D	1	#2"	POLY	SCREW ON TOP POLY-VENT	VENT
E	1	#18"	POLY	SCREWED ON TOP MANWAY	INSPECTION
F					
G					
H					
I					
J					
K					
L					
M					
N					
O					
P					
Q					
R					
S	2	STD	STL	BELCO STANDARD LIFTING LUG	ZINC-PLATED

DESIGN DETAILS: PRESSURE          ATMOS. PSIG; TEMP.          AMB. DEG. F  
 WIND LOAD          SQ. MPH; SEISMIC ZONE         , PER UBC S.G.          1.0  
 FABRICATION PER: ASTM D3299 X ASTM D4097 X PS 15-69 X  
 OTHERS:           
 RESIN:          FDA APPROVED ISO RESIN

APPROVED AS SHOWN   
 APPROVED AS NOTED

CUSTOMER SIGNIFIES APPROVAL OF THESE SPECIFICATIONS BY SIGNING AND RETURNING ONE COPY TO BELCO.

Authorizing Signature \_\_\_\_\_ Date \_\_\_\_\_

**FABRICATION NOTES**

SHELL:  
X FLAUMENT WOUND          - INSULATION TYPE           
         HAND LAYUP          - THICK           
         CORROSION BARRIER          - OVERWRAP REQ'D          THICK         

EXTERIOR:  
X EXTERIOR COLOR PIGMENTED GRAY  
         VEL MAT REQ'D, TYPE           
         CUSTOMER INSPECTION REQUIRED BEFORE APPLICATION OF EXT. GEL  
         SAVE CUTOUTS  
         HYDROTEST

BOLTS          ZINC-PLATED STEEL  
 NUTS          ZINC-PLATED STEEL  
 GASKETS          1/8" NEOPRENE

SCALE	REV.	DATE	DRAWN	CHECKED	
NONE	A	-	-	-	
SUBMITTED for APPROVAL					

POTABLE WATER TANK

DWG. # \_\_\_\_\_