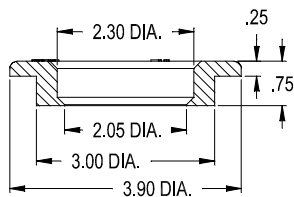


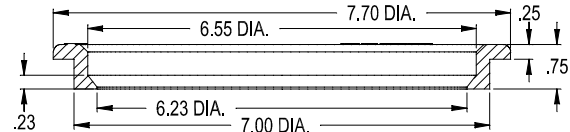
1 1/4" GROMMET  
PART NO. 3007-GM1.25  
(USE 2" HOLE SAW)



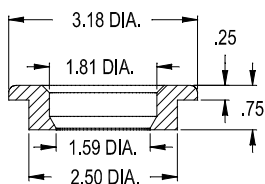
2" GROMMET  
PART NO. 3007-GM2  
(USE 3" HOLE SAW)



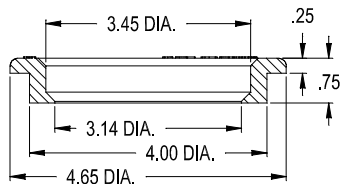
4" SDR 35 GROMMET  
PART NO. 3007-GM435  
(USE 5" HOLE SAW)



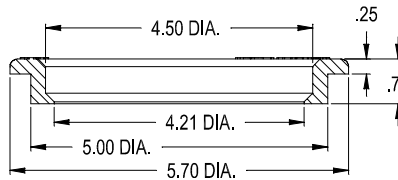
6" SCH40 GROMMET  
PART NO. 3007-GM6  
(USE 7" HOLE SAW)



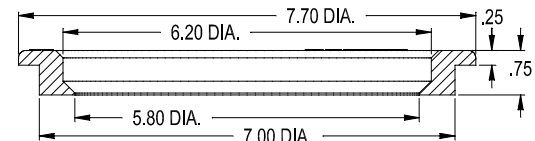
1 1/2" GROMMET  
PART NO. 3007-GM1.50  
(USE 2 1/2" HOLE SAW)



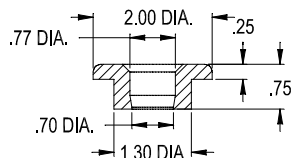
3" GROMMET  
PART NO. 3007-GM3  
(USE 4" HOLE SAW)



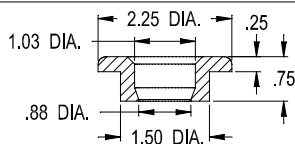
4" SCH40 GROMMET  
PART NO. 3007-GM440  
(USE 5" HOLE SAW)



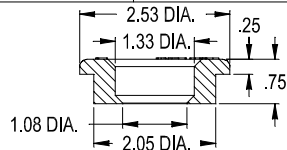
6" SDR 35 GROMMET  
PART NO. 3007-GM635  
(USE 7" HOLE SAW)



1/2" GROMMET  
PART NO. 3007-GM.50  
(USE 1 1/4" HOLE SAW)



3/4" GROMMET  
PART NO. 3007-GM.75  
(USE 1 1/2" HOLE SAW)



1" GROMMET  
PART NO. 3007-GM1  
(USE 2" HOLE SAW)

**POLYLOK GROMMETS  
MATERIAL - PVC**