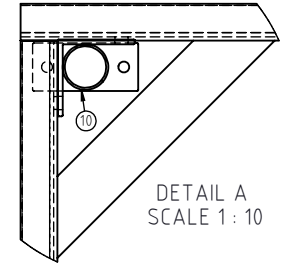
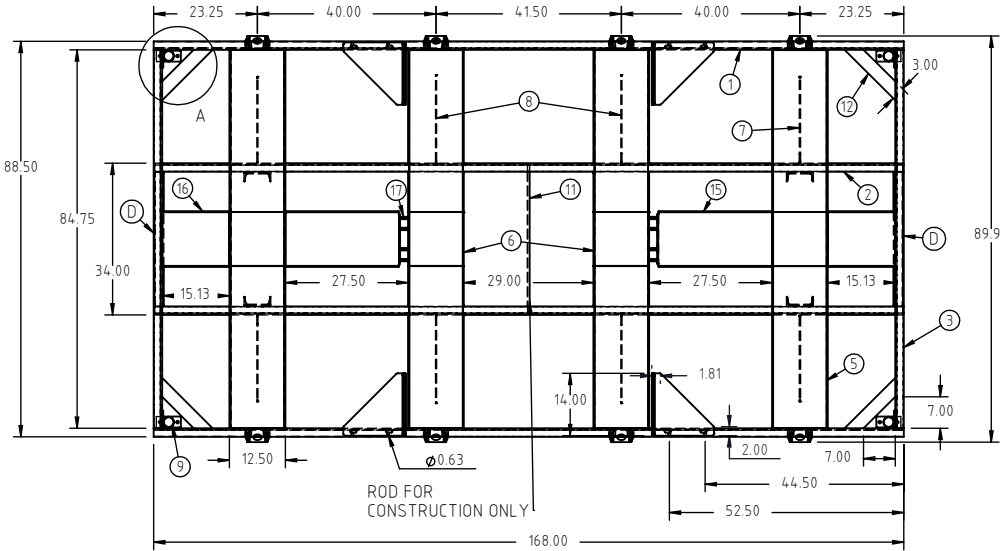
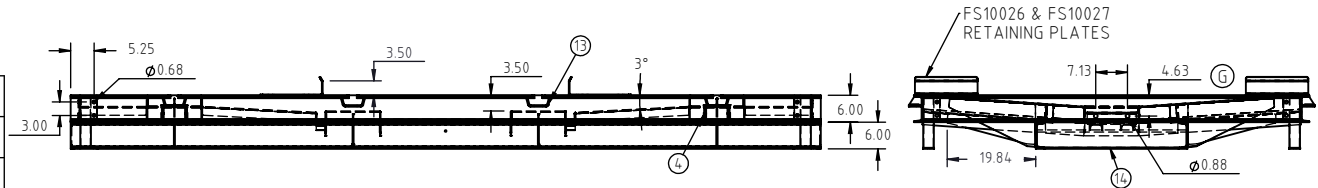


Copyright. All information furnished within this document, electronic file or design correspondence is the property of Den Hartog industries, Inc. and shall not be used, disclosed to others or copied without the expressed written consent of Den Hartog Industries, Inc.

KEY	PART NUMBER	DESCRIPTION	QTY.
1	FS3200-SK-1	SIDE CHANNEL	2
2	FS3200-SK-2	INNER CHANNEL	2
3	FS3200-SK-3	END CHANNEL	2
4	FS3200-SK-4	BASE SUPPORT CHANNEL	4
5	FS3200-SK-5	TANK SUPPORT	2
6	FS3200-SK-6	TANK SUPPORT-SLOTS	2
7	FS3200-SK-7	TANK SUPPORT GUSSET	4
8	FS3200-SK-8	TANK SUPPORT GUSSET-SMALL	4
9	12677	STABILIZER LEG-LEFT	2
10	12678	STABILIZER LEG-RIGHT	2
11	FS3200-SK-12	FILLER ROD	1
12	FS3200-SK-13	SIDE/END BRACE	4
13	SJ19121	BRACKET	8
14	12455	LOWER CROSSMEMBER	2
15	FS3200-SK-14	FORMED CHANNEL-LONG	2
16	FS3200-SK-15	FORMED CHANNEL-SHORT	2
17	FS3200-SK-16	SUPPORT CHANNEL	4



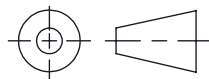
G	DRAWING TEMPLATE/LAYOUT UPDATED, SUMP SUPPORT COMPONENTS, POWDER COATING HOLES, WEIGHT ADDED.	ADH 2/16/11	2173
F	TABLE ADDED TO DRAWING, LEGS GIVEN SEPARATE P.N.'S, DRAWING TEMPLATE UPDATED.	ADH 3/27/09	1828
E	RETAINING PLATE/HOLES UPDATED	ADH 4/10/08	
D	12455 ADDED	REH 4/16/07	1295
C	TOLERANCE WAS 1% @ 68°F	GWC 3/19/07	
B	CHANGE WIDTH	5/5/03	
A	ADD HOOP BRACKET	5/5/03	
REV	DESCRIPTION	BY / DATE	CCN



ALL DIMENSIONS ARE IN DECIMAL INCHES
TOLERANCES UNLESS OTHERWISE SPECIFIED

POLYETHYLENE	METAL DECIMAL ± .125" FRACTION ± 1/4" ANGLE ± 1°
±1% @ 68°F	

THIRD ANGLE PROJECTION
ANSI 14.5M



SHOT WEIGHT:
SHIPPING WEIGHT:
FINISH: POWDER COATING, BLACK TILE, 40012

1163.00 LBS

NOTES:

DRAWN / DATE
DHJ/1/6/03

APPROD. / DATE
REH 4/16/07

MATERIAL



Den Hartog
INDUSTRIES, INC.

Ace Roto-Mold Injection Molding Blow Molding Sowjoy

4010 HOSPERS DRIVE S. BOX 425, HOSPERS, IOWA 51238-0421

DESCRIPTION
3200 GALLON TANK SKID

SCALE
N.S.

PART NO.
FS3200-SK