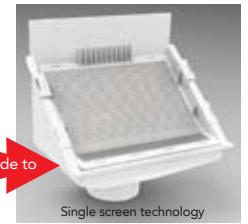
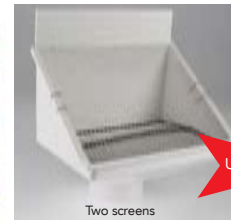


LEAF EATER upgrade screen™

Products: Leaf Eater Upgrade Screen
Code: RHAC99



LEAF BEATER upgrade screen™

Products: Leaf Beater Upgrade Screen
Code: RHAC98



Upgrade for low maintenance with superior performance

Product Description

Upgrade the Leaf Eater Original and Leaf Beater® Original Rain Heads with Upgrade Screens incorporating patented Clean Shield™ technology. Clean Shield™ technology incorporates single screen technology and ensures debris is directed away from the flow of water and off the rain head's screen. The Upgrade Screens will increase flow rates and enhance catchment efficiency. Minimal maintenance is required as the Clean Shield™ screen automatically sheds debris.

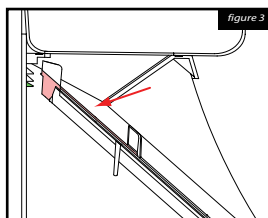
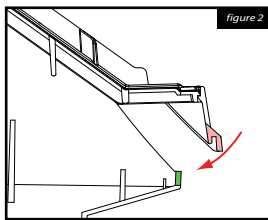
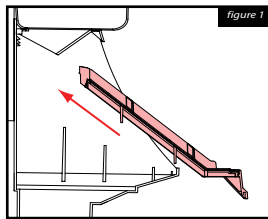
Features and Benefits

- Upgrade Screens available for Leaf Eater Original and Leaf Beater® Original Rain Heads
- A single mosquito proof stainless steel mesh screen with 1/32" aperture
- Single screen technology for advanced debris shedding (Clean Shield™ technology)
- Enhances catchment efficiency and flow rate, by deflecting debris away from the flow of water
- Increases flow rate performance
- Easy to install and minimal maintenance

Installation

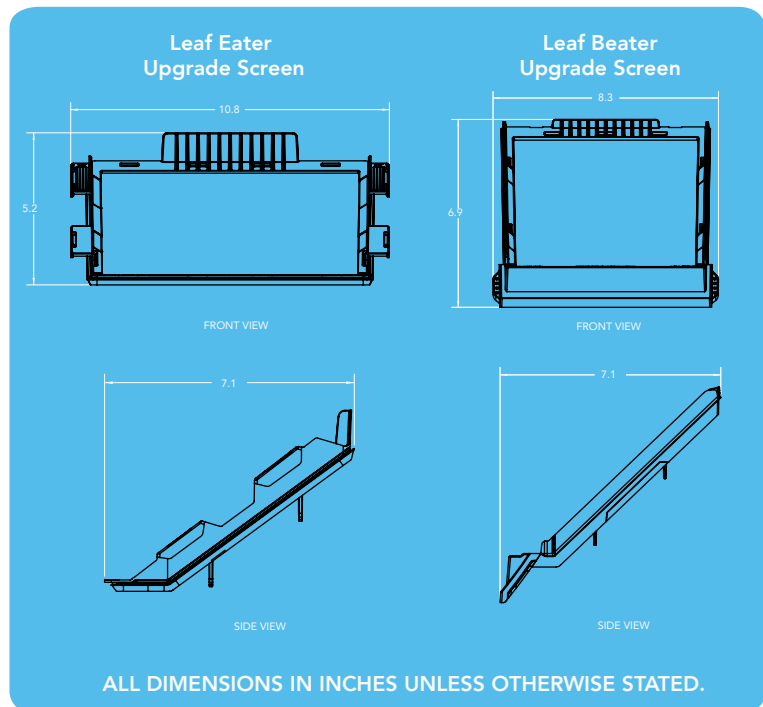
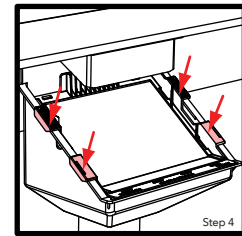
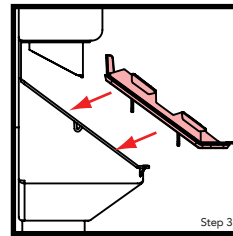
Leaf Beater® Original

1. Remove both the primary and secondary screen from your Leaf Beater Original® Rain Head. **Discard these as they are no longer required.**
2. Ensure that the Leaf Beater® Original Rain Head is free from leaves and debris.
3. Insert the new Leaf Beater® Original upgrade screen into the rain head at an angle (figure 1) until the front rubber channel (red) is nearly over the front lip (green) of the body.
Tip: Wetting the rubber seal will help the screen slide into place.
4. Fix the front of the Leaf Beater® Original screen into place (figure 2) by sliding the rubber channel (red) over the front lip (green) of the body.
5. Reaching towards the back of the Leaf Beater® Original upgrade screen push down on the plastic frame (figure 3) so that the rear edge (red) is below the lowest notch (green) and firmly against the back wall of the Leaf Beater® Original.



Leaf Eater Original

1. Remove both the primary and secondary screen from your Leaf Eater Original Rain Head. **Discard these as they are no longer required.**
2. Ensure that the Leaf Eater Original Rain Head is free from leaves and debris.
3. Take the new Leaf Eater Original upgrade screen and fit it into the front of the Leaf Eater Original.
4. Push down on the front and rear quick release tabs of the Leaf Eater Original Upgrade Screen to ensure a tight fit with the Leaf Eater Original body.



Maintenance

The Leaf Eater Original and Leaf Beater® Original upgrade screens require minimal maintenance. If it does become necessary to clean, simply lift the release tabs, then hose or brush off.

DISCLAIMER This product specification is not a complete guide to product usage. Further information is available from Rain Harvesting Pty Ltd and from the Installation and Operating Instructions. This specification sheet must be read in conjunction with the Installation and Operating Instructions and all applicable statutory requirement. Product specifications may change without notice. © Rain Harvesting Pty Ltd